

LG LAUNDRY
WM4000H_A

4.5 cu.ft. Front Load Washer with TurboWash™ 360° and Built-In Intelligence

4.5 cu. ft. Ultra Large Capacity
 TurboWash™ 360° Technology
 AI Fabric Sensor/ Smart Pairing™
 AAFA certified LG washer
 LG ThinQ® Technology / Proactive Customer Care
 Tempered Glass Door
 ColdWash™ Technology
 Direct Drive Motor 10-Year Limited Warranty
 ENERGY STAR® Certified
 Closet Depth
 NeveRust™ Stainless Steel Tub

AVAILABLE COLORS


Enjoy new ways to control your home with LG smart appliances

- Use the ThinQ® app to start the laundry while you're out
- Get alerts when the cycle is finished
- With Smart Pairing™, the washer can tell the dryer to select a compatible drying cycle

LG ThinQ®

SUMMARY

Type	Front Load Washer
Capacity (cu.ft.)	4.5 cu. ft.
Matching Electric Dryer	DLEX4000W, DLEX4000B
Matching Gas Dryer	DLGX4001W, DLGX4001B
Color	White (W), Black Steel (B)

APPEARANCE

Hard Buttons	Yes
Touch Buttons	Yes
Dial-A-Cycle™	Yes

ENERGY

ENERGY STAR® Most Efficient 2019	Yes
ENERGY STAR® Qualified	Yes
CEE Tier	2
IMEF	2.92
IWF	2.9

WASH PROGRAMS

No. of Programs	12
Wash Programs	Normal, Perm. Press, Heavy Duty, Delicates, Towels, Speed Wash, Bedding, Tub Clean, Bright Whites™, Sanitary, Allergiene™, Downloaded

WASH OPTIONS

No. of Options	13
Options	TurboWash®, Steam, Fresh Care, Pre-wash, Remote Start, Delay Wash, Wi-Fi, Add Item, ColdWash, Extra Rinse, Rinse+Spin, Control Lock, Spin Only

WASH DETAILS

No. of Wash/Rinse Temps	5
Wash/Rinse Temps	Extra Hot, Hot, Warm, Cold, Tap Cold
No. of Spin Speeds	5

Spin Speeds	Extra High, High, Medium, Low, No Spin
Max RPM	1300
Water Levels	Load Sensing
No. of Soil Levels	5

FABRIC CARE FEATURES

AI DD™	Yes
TurboWash™ 360 Technology	Yes
Steam Technology	Yes
Allergiene™ Cycle	Yes
Sanitary Cycle	Yes
ColdWash™ Option	Yes
SenseClean™ System	Yes

CONVENIENCE FEATURES

TrueBalance™ Anti-Vibration System	Yes
4 Tray Dispenser	Prewash, Main Wash (with liquid detergent cup), Bleach, Fabric Softener
LoDecibel™ Quiet Operation	Yes
End of Cycle Signal	Yes
LoadSense	Yes
Child Lock	Yes
Auto Suds Removal	Yes
Leveling Legs	4 Adjustable Legs
Easy Loading TilTub™	Yes

ThinQ® TECHNOLOGY

SmartDiagnosis™ (v3.0)	Yes
Wi-Fi	Yes
Remote Start and Cycle Monitor	Yes
Energy Monitoring	Yes

MOTOR AND AGITATOR

Motor Type	Inverter Direct Drive Motor
Axis	Horizontal

MATERIALS AND FINISHES

NeveRust™ Stainless Steel Drum	Yes
Cabinet	PCM
Control Panel	Plastic
Top Plate	Painted
Door / Rim	Glass/Sand Beige
Door Cover	Tinted Cover
All Available Colors	White (W), Black Steel (B)

CERTIFICATION

AAFA	Yes
------	-----

POWER SOURCE

Ratings	UL Listed
Electrical Requirements	120V, 10 Amps
Type	Electric

OPTIONS/ACCESSORIES

Pedestal	WDP4W, WDP4B
Pedestal (WxHxD)	27 x 14 1/8 x 30 3/4 (50 9/16 D with door open)
LG Sidekick™ Pedestal Washer	WD100CW, WD100CB
LG Sidekick™ Pedestal Washer (WxHxD)	27 x 14 1/8 x 30 3/4 (50 9/16 D with door open)
Stacking Kit	KSTK1

DIMENSIONS 686 x 991 x 768

Product (WxHxD)	27" x 39" x 30 1/4"
Depth with Door Open	(55" D with door open)
Carton (WxHxD)	29 23/32" x 41 27/32" x 31 17/32"

Weight (Product/Carton)	187.4 / 209.8 lbs
-------------------------	-------------------

LIMITED WARRANTY

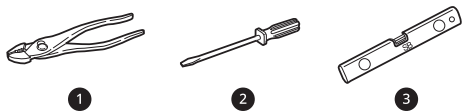
Parts and Labor	1 Year
Direct Drive Motor	10 Years
Drum	3 Years

UPC CODES

WM4000HWA (White)	048231028288
WM4000HBA (Black Steel)	048231028271

⚠ WARNING

- Certain internal parts are intentionally not grounded and may present a risk of electric shock only during servicing. Service personnel- Do not contact the following parts while the appliance is energized: pump, valve, motor, control board.

Tools Needed

- ❶ Pliers
- ❷ Flat-Blade Screwdriver
- ❸ Level

Choosing the Proper Location

Check the following requirements for the install location before installing the washer.

- Allow for sufficient space between the walls and the washer for installation.
- Make sure that the floor is clean, dry and free of dust, dirt, water and oil so the leveling feet cannot slide easily. Leveling feet that can move or slide on the floor can contribute to excess vibration and noise.
- If the floor has too much flex, reinforce it to make it more rigid. If the floor is not solid, it may cause severe vibration and noise.
- If a drain pan must be used, take extra care to follow the instructions provided with the drain pan and make sure the leveling feet are adjusted for firm and even contact with the pan. Use of drain pans and failure to properly level the washer may result in increased vibration and noise during operation.

Power Outlet

- The power outlet must be within **60 inches (1.5 m)** of either side of the washer.
- Position the washer so that the outlet and plug are easily accessible.
- Do not overload the outlet with more than one appliance.
- The outlet must be grounded in accordance with current electrical wiring codes and regulations.
- Use a time-delay fuse or circuit breaker.

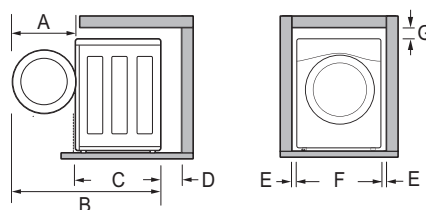
- It is the personal responsibility and obligation of the washer owner to have a proper outlet installed by a qualified electrician.

Flooring

- To minimize noise and vibration, install the washer on a level, solidly constructed floor capable of supporting the washer without flexing or bouncing.
- The washer must be installed on firm flooring to minimize vibration during the spin cycle. Concrete flooring is best, but a wood floor is sufficient, provided it is built to FHA standards.
- The floor under the washer must not slope more than 1 inch (2.5 cm) from front to back or side to side.
- Installing on carpeting and soft tile surfaces is not recommended.
- Never install the washer on a platform or weakly supported structure.

Floor Installation washer

To ensure sufficient clearance for water inlet hoses, drain hose and airflow, allow minimum clearances of at least **1 inch (2.5 cm)** at the sides and **4 inches (10 cm)** behind the washer. Be sure to allow for wall, door, or floor moldings that may increase the required clearances.



Dimensions and Clearances	
A	24 3/4" (62.6 cm)
B	55" (139.6 cm)
C	30 1/4" (77 cm)
D	4" (10 cm)
E	1" (2.5 cm)
F	27" (70 cm)
G	1/4" (0.5 cm)

DLEX4000_ / DLGX4001_

7.4 cu.ft. Front Load Dryer with TurboSteam™ and Built-In Intelligence

7.4 cu. ft. Ultra Large Capacity
 TurboSteam™ Technology
 AI Fabric Sensor/ Smart Pairing™
 LG ThinQ® Technology / Proactive Customer Care
 Tempered Glass Door
 FlowSense™ Duct Clogging and Lint Filter Indicators
 ENERGY STAR® Certified
 Closet Depth
 LoDecibel™ Quiet Operation
 Reversible Door
 Wrinkle Care Option

AVAILABLE COLORS



LG ThinQ®



Enjoy new ways to control your home with LG smart appliances

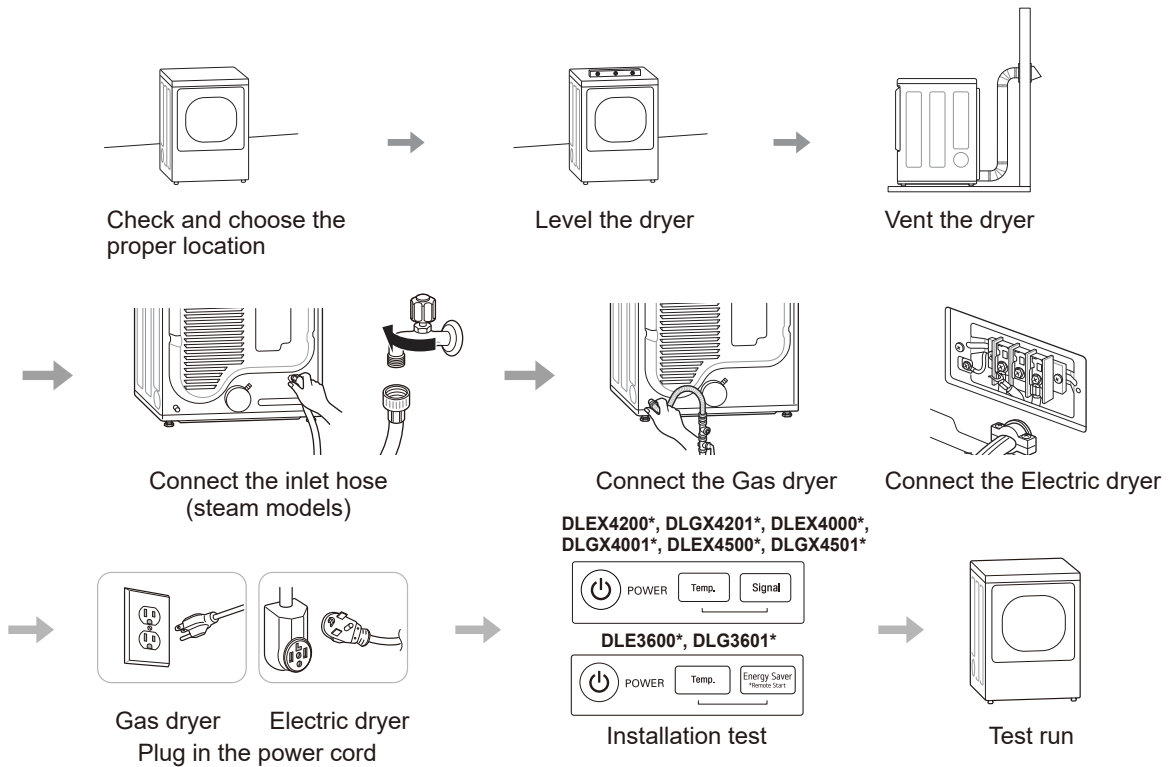
- Use the ThinQ® app to start the laundry while you're out
- Get alerts when the cycle is finished
- With Smart Pairing™, the washer can tell the dryer to select a compatible drying cycle

SUMMARY		FABRIC CARE FEATURES		POWER SOURCE	
Type	Front Load Dryer	A.I Dry	Yes	Ratings	CSA Listed
Capacity	7.4 cu. ft.	Sensor Dry	Yes	Electrical Requirements	120V, 15 Amps (Gas) / 240V 30 Amps (Electric)
Matching Washer	WM4000HWA, WM4000HBA	Precise Temperature Control with Variable Heater	Yes	Type	Electric, Gas
Sensor Dry	Yes	Steam	TurboSteam™	BTU Rating	Gas: 20,000
Steam	Yes	CONVENIENCE FEATURES		OPTIONS	
Color	White (W), Black Steel (B)	3 Minute Installation Check	Yes	LP Conversion Kit	383EEL3002D
APPEARANCE		LoDecibel™ Quiet Operation	Yes	Side Venting Kit	3911EZ9131X
Intelligent Electronic Controls with LED Display	Yes	End of Cycle Signal	Yes	Pedestal	WDP4W, WDP4B
Dial-A-Cycle™	Yes	Drum Light	Yes	Pedestal (WxHxD)	27" x 14 1/8" x 30 3/4" (50 1/2" D with door open)
Touch Buttons	Yes	Reversible Door	Yes	DIMENSIONS (ELECTRIC)	
DRYER PROGRAMS		FlowSense™ Duct Clogging Indicator	Yes	Product (WxHxD)	27" x 39" x 30 1/8"
No. of Programs	12	Wrinkle Care Option	Yes	Depth with Door Open	51 3/8"
Programs (Sensor Dry)	Normal, Heavy Duty, Bedding, Anti Bacterial, SteamSanitary™, SteamFresh™, Perm Press, Delicates, Towels, Speed Dry (Manual Dry), Air Dry (Manual Dry), Downloaded	Child Lock	Yes	Carton (WxHxD)	29 1/2" x 42 1/4" x 31 1/4"
No. of Options	12	Venting Option	Electric: 4 Way Venting / Gas: 3 Way Venting	Weight (Product)	125.3 lbs
Options	More Time, Less Time, Damp Dry Signal, Wrinkle Care, Control Lock, Wi-Fi, Energy Saver, TurboSteam™, Reduce Static, Remote Start, Drum Light, Signal	4 Adjustable Legs	Yes	Weight (Carton)	142.6 lbs
Temperature Settings	High, Med.High, Medium, Low, Ultra Low	Remaining Time Display/Status Indicator(s)	Yes	DIMENSIONS (GAS)	
Drying Levels	Very Dry, More Dry, Normal Dry, Less Dry, Damp Dry	ThinQ® TECHNOLOGY		Product (WxHxD)	27" x 39" x 30 1/8"
Manual Dry Times	60 min., 50 min., 40 min., 30 min., 20 min., More Time/Less Time	SmartDiagnosis™ (v3.0)	Yes	Depth with Door Open	51 3/8"
		Wi-Fi	Yes	Carton (WxHxD)	29 1/2" x 42 1/4" x 31 1/4"
		Remote Start and Cycle Monitor	Yes	Weight (Product)	139.3 lbs
		Energy Monitoring	Yes (Wi-Fi)	Weight (Carton)	155.0 lbs
		ENERGY		LIMITED WARRANTY	
		ENERGY STAR® Certified	Yes	Parts & Labor	1 Year
		CEF	3.94 (Electric), 3.49 (Gas)	Drum	3 Years
		MATERIALS AND FINISHES		UPC CODES	
		Aluminized Alloy Steel Drum	Yes	DLEX4000W (White)	048231028370
		Tub Rear	Painted	DLGX4001W (White)	048231028387
		Cabinet	Painted Steel	WM4000HWA (White)	048231028288
		Door	Tempered Glass Door	DLEX4000B (Black Steel)	048231028356
		All Available Colors	White (W), Black Steel (B)	DLGX4001B (Black Steel)	048231028363
				WM4000HBA (Black Steel)	048231028271

INSTALLATION

Installation Overview

Please read the following installation instructions first after purchasing this product or transporting it to another location.



Product Specifications

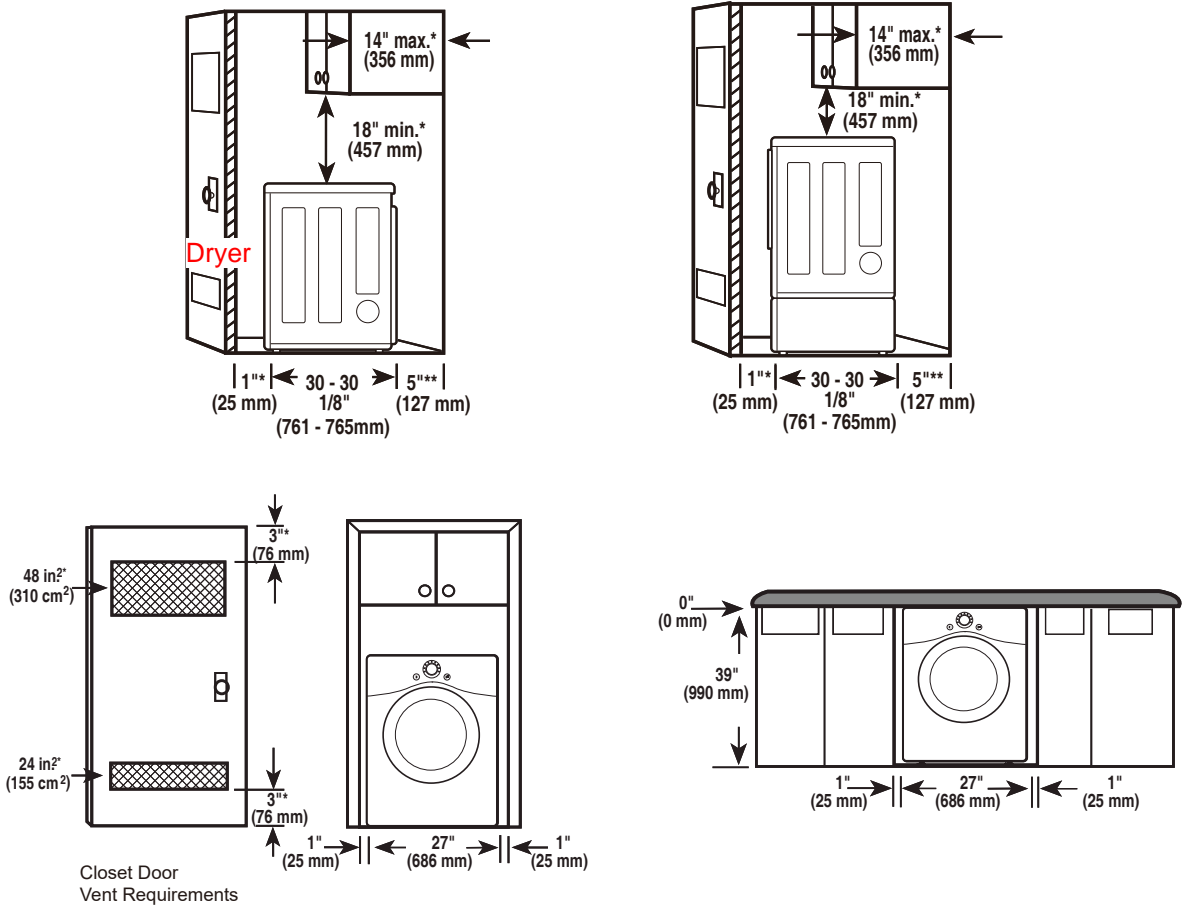
The appearance and specifications listed in this manual may vary due to constant product improvements.

Dryer Models	DLE3600*, DLG3601*	DLEX4000*, DLGX4001*	DLEX4200*, DLGX4201*	DLEX4500*, DLGX4501*
Description	Non-steam Dryer	Steam Dryer	Steam Dryer	
Electrical requirements	Please refer to the rating label for detailed information.			
Gas requirements	NG: 4 - 10.5-inch (10.2 - 26.7 cm) WC LP: 8 - 13-inch (20.4 - 33.1 cm) WC			
Dimensions	27" (W) X 30 1/8" (D) X 39" (H), 51 3/8" (D with door open) 68.6 cm (W) X 76.5 cm (D) X 99 cm (H), 130.5 cm (D with door open)		27" (W) X 30" (D) X 39" (H), 51" (D with door open) 68.6 cm (W) X 76.1 cm (D) X 99 cm (H), 129.7 cm (D with door open)	
Net weight	Gas : 136.03 lb (61.7kg) - 139.34 lb (63.2kg) Electric : 121.9 lb (55.3kg) - 125.3 lb (56.8kg)		Gas : 140.4 lb (63.7 kg) Electric : 133.4 lb (60.5 kg)	
Drying capacity	Steam Cycle	-	IEC 7.4 cu.ft. (8 lb/3.6 kg)	
	Normal Cycle	IEC 7.4 cu.ft. (22.5 lb/10.2 kg)		

NOTE

Model numbers can be found on the cabinet inside the door.

Clearances



Installation Spacing for Recessed Area or Closet Installation

The following clearances are recommended for this dryer. This dryer has been tested for clearances of 1 inch (2.5 cm) on the sides and rear. Recommended clearances should be considered for the following reasons:

- Additional clearances should be considered for ease of installation and servicing.
- Additional clearances should be considered on all sides of the dryer to reduce noise transfer. For closet installation, with a door, minimum ventilation openings in the top and bottom of the door are required. Louvered doors with equivalent ventilation openings are acceptable.

Closet Ventilation Requirements

Closets with doors must have both an upper and lower vent to prevent heat and moisture buildup in the closet. One upper vent opening with a minimum opening of 48 sq. in. (310 cm²) must be installed no lower than 6 feet above the floor. One lower vent opening with a minimum opening of 24 sq. in. (155 cm²) must be installed no more than one foot above the floor. Install vent grilles in the door or cut down the door at the top and bottom to form openings. Louvered doors with equivalent ventilation openings are also acceptable.

NOTE

- There should be at least a little space around the dryer (or any other appliance) to eliminate the transfer of vibration from one appliance to another. If there is enough vibration, it could cause appliances to make noise or come into contact, causing paint damage and further increasing noise.